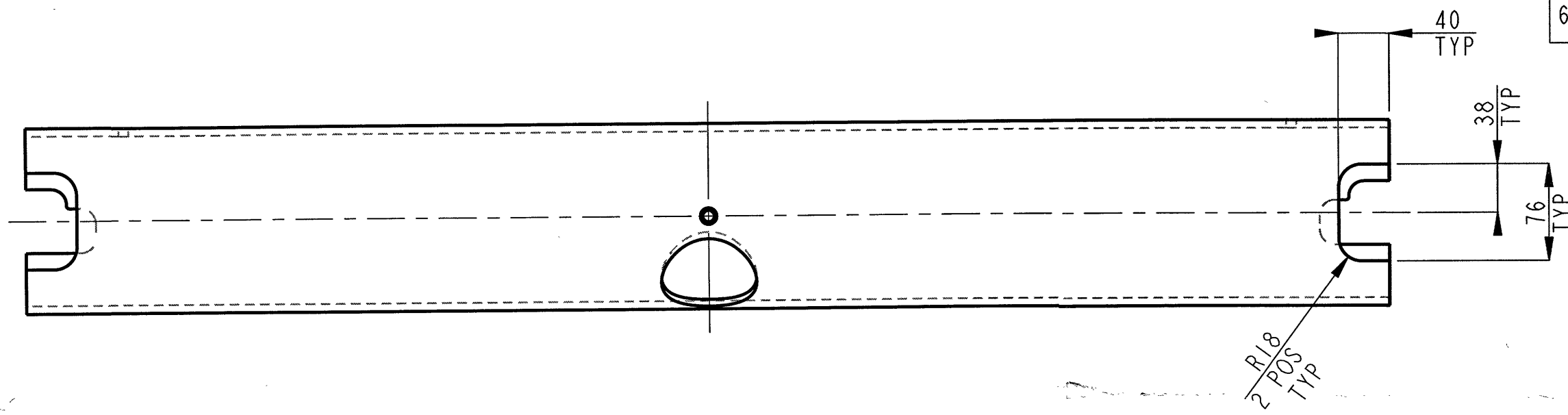




IF IN DOUBT ASK
V případě nejasností

ALL DIMENSIONS IN MM UNLESS OTHERWISE STATED
Pokud není uvedeno jinak, jsou všechny rozměry uvedeny v mm.

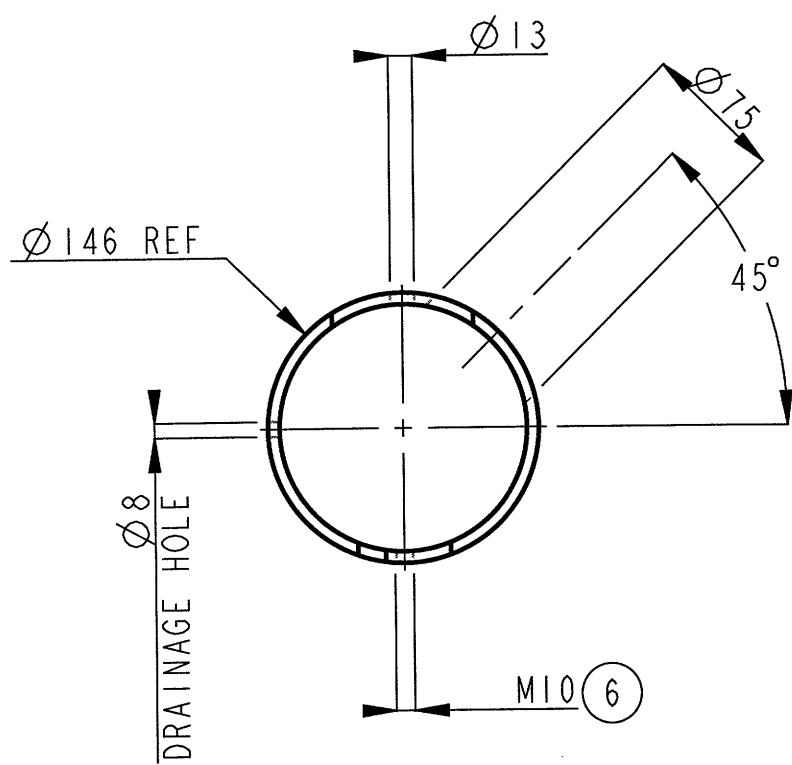
Ref	Ont.	Revision	Date	Intro	App. by
1		ORIGINAL	20-03-06	SAB	
2		DC 6828	19-03-07	SAB	
3		CC 10233	22/8/08	DR	
4		CC 16039	24/07/14	AS	
6		CC 16677	09/02/15	ART	



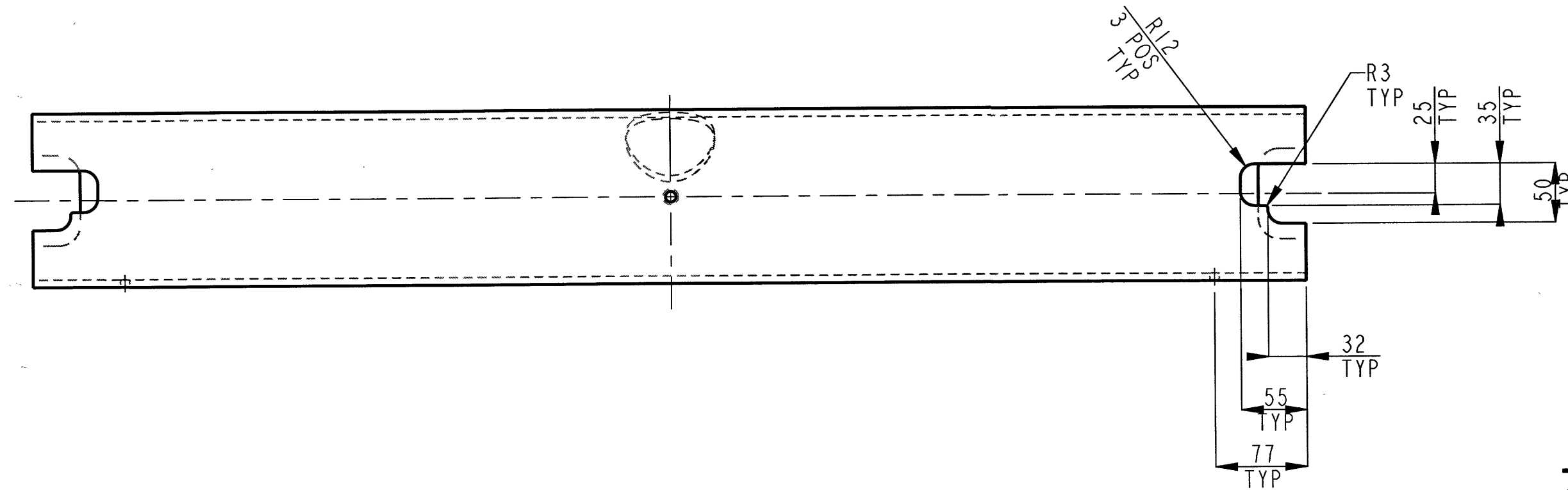
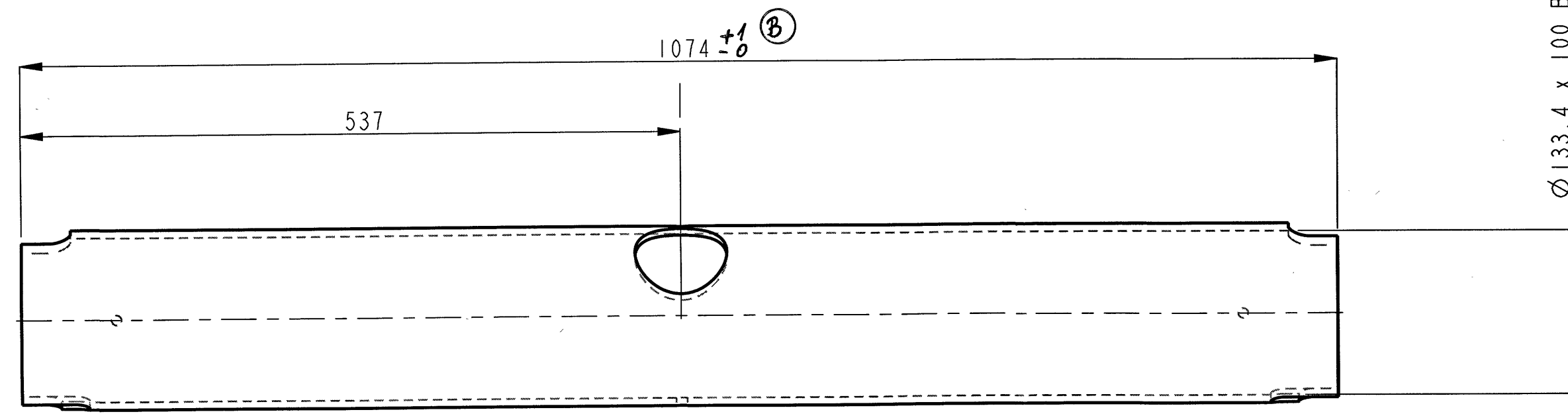
hloubka vrtání

pro alternativní tloušťku vrstvy oba konce

Ø133.4 x 100 BORE DEPTH
FOR ALTERNATIVE MAT'L THICKNESS TYP BOTH ENDS



drenáž díry



Poznámky:
1. Odstraň všechny otřepy a ostré hrany
2. Tolerance pokud není uvedeno jinak:
Lineárně až do +- 0,5
před 1000+- 1
úhly +-+ 0 st.30 min. Rozměry na první des.místo +- 0,1

NOTES:-

- REMOVE ALL BURRS & SHARP EDGES
- TOLERANCES UNLESS OTHERWISE STATED:-
LINEAR UP TO 1000 ±0.5
OVER 1000 ±1
ANGLES ±0° 30'

DIMENSIONS STATED TO FIRST DECIMAL PLACE ±0.1

Ⓟ ZM/19/00058 DOPLNĚNA TOLERANCE PRO ROZMĚR 10x4 ±1 21.2.2019

2
ARCHIV
19.2.2019
ZM/19/00058

Milton Keynes
Bucks MK13 0ER
Telephone 01908 223456
Telefax 01908 312733
THIS DRAWING MUST NOT BE COPIED,
REPRODUCED OR DISCLOSED TO ANY
THIRD PARTY WITHOUT EXPRESS
PERMISSION OF NIFTYLIFT LIMITED.

Ref. no.	Qnt.	Part name	Material	Dimension	Remark	Component No.
1	1	AXLE - REAR	EN10025 S275J0	DIA 146.3 THK	STEEL TUBE	
Design by	Drawn by	Copied	Checked	Standard	Affirmed	Scale
MN	SAB					NTS
SHEET 1 OF 1						HR12 4x4
AXLE - REAR						File K00220 Date 20-03-06
						Drawing no. K00220