

INNER MAST ASSY No.	ITEM No.	PART No.	DESCRIPTION
179 440 40 43	1	179 446 82 41	PROFILE LH
	2	179 446 82 31	PROFILE RH
Dim L:	2911		
Dim Y:	1514	179 440 83 01	CROSSMEMBER ASSY
Dim Z:	168	179 446 38 08	CROSS PIECE
Lift:	3.0	179 446 26 02	CYLINDER SUPPORT LH
Weight: Kg.	1083	179 446 26 04	CYLINDER SUPPORT RH
	8	179 446 39 05	PLATE JOINING
	9	179 446 39 06	PLATE JOINING
	10	177 446 13 37	PLATE

INNER MAST ASSY No.	ITEM No.	PART No.	DESCRIPTION
179 440 40 46	1	179 446 82 44	PROFILE LH
Dim L:	3681	179 446 82 34	PROFILE RH
Dim Y:	1894	179 440 83 01	CROSSMEMBER ASSY
Dim Z:	167	179 446 38 08	CROSS PIECE
Lift:	4.5	179 446 26 02	CYLINDER SUPPORT LH
Weight: Kg.	1307	179 446 26 04	CYLINDER SUPPORT RH
	8	179 446 39 05	PLATE JOINING
	9	179 446 39 06	PLATE JOINING
	10	177 446 13 37	PLATE

INNER MAST ASSY No.	ITEM No.	PART No.	DESCRIPTION
179 440 40 49	1	179 446 82 47	PROFILE LH
Dim L:	4411	179 446 82 37	PROFILE RH
Dim Y:	2158	179 440 83 01	CROSSMEMBER ASSY
Dim Z:	167	179 446 38 08	CROSS PIECE
Lift:	6.0	179 446 26 02	CYLINDER SUPPORT LH
Weight: Kg.	1505	179 446 26 04	CYLINDER SUPPORT RH
	8	179 446 39 05	PLATE JOINING
	9	179 446 39 06	PLATE JOINING
	10	177 446 13 37	PLATE

INNER MAST ASSY No.	ITEM No.	PART No.	DESCRIPTION
179 440 40 44	1	179 446 82 42	PROFILE LH
Dim L:	3161	179 446 82 32	PROFILE RH
Dim Y:	1636	179 440 83 01	CROSSMEMBER ASSY
Dim Z:	168	179 446 38 08	CROSS PIECE
Lift:	3.5	179 446 26 02	CYLINDER SUPPORT LH
Weight: Kg.	1158	179 446 26 04	CYLINDER SUPPORT RH
	8	179 446 39 05	PLATE JOINING
	9	179 446 39 06	PLATE JOINING
	10	177 446 13 37	PLATE

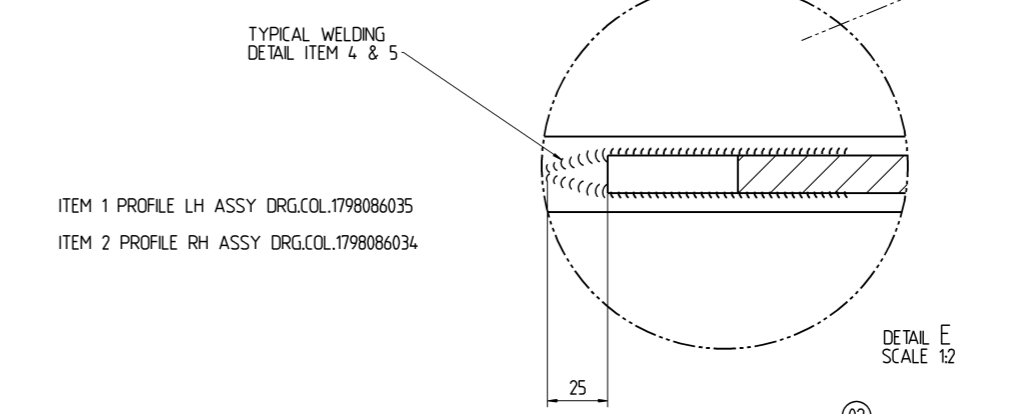
INNER MAST ASSY No.	ITEM No.	PART No.	DESCRIPTION
179 440 40 47	1	179 446 82 45	PROFILE LH
Dim L:	3911	179 446 82 35	PROFILE RH
Dim Y:	2015	179 440 83 01	CROSSMEMBER ASSY
Dim Z:	167	179 446 38 08	CROSS PIECE
Lift:	5.0	179 446 26 02	CYLINDER SUPPORT LH
Weight: Kg.	1373	179 446 26 04	CYLINDER SUPPORT RH
	8	179 446 39 05	PLATE JOINING
	9	179 446 39 06	PLATE JOINING
	10	177 446 13 37	PLATE

INNER MAST ASSY No.	ITEM No.	PART No.	DESCRIPTION
179 440 40 50	1	179 446 82 48	PROFILE LH
Dim L:	4661	179 446 82 38	PROFILE RH
Dim Y:	2379	179 440 83 01	CROSSMEMBER ASSY
Dim Z:	168	179 446 38 08	CROSS PIECE
Lift:	6.5	179 446 26 02	CYLINDER SUPPORT LH
Weight: Kg.	1571	179 446 26 04	CYLINDER SUPPORT RH
	8	179 446 39 05	PLATE JOINING
	9	179 446 39 06	PLATE JOINING
	10	177 446 13 37	PLATE

INNER MAST ASSY No.	ITEM No.	PART No.	DESCRIPTION
179 440 40 45	1	179 446 82 43	PROFILE LH
Dim L:	3411	179 446 82 33	PROFILE RH
Dim Y:	1758	179 440 83 01	CROSSMEMBER ASSY
Dim Z:	168	179 446 38 08	CROSS PIECE
Lift:	4.0	179 446 26 02	CYLINDER SUPPORT LH
Weight: Kg.	1224	179 446 26 04	CYLINDER SUPPORT RH
	8	179 446 39 05	PLATE JOINING
	9	179 446 39 06	PLATE JOINING
	10	177 446 13 37	PLATE

INNER MAST ASSY No.	ITEM No.	PART No.	DESCRIPTION
179 440 40 48	1	179 446 82 46	PROFILE LH
Dim L:	4161	179 446 82 36	PROFILE RH
Dim Y:	2137	179 440 83 01	CROSSMEMBER ASSY
Dim Z:	167	179 446 38 08	CROSS PIECE
Lift:	5.5	179 446 26 02	CYLINDER SUPPORT LH
Weight: Kg.	1439	179 446 26 04	CYLINDER SUPPORT RH
	8	179 446 39 05	PLATE JOINING
	9	179 446 39 06	PLATE JOINING
	10	177 446 13 37	PLATE

INNER MAST ASSY No.	ITEM No.	PART No.	DESCRIPTION
179 440 40 51	1	179 446 82 49	PROFILE LH
Dim L:	4911	179 446 82 39	PROFILE RH
Dim Y:	2501	179 440 83 01	CROSSMEMBER ASSY
Dim Z:	168	179 446 38 08	CROSS PIECE
Lift:	7.0	179 446 26 02	CYLINDER SUPPORT LH
Weight: Kg.	1637	179 446 26 04	CYLINDER SUPPORT RH
	8	179 446 39 05	PLATE JOINING
	9	179 446 39 06	PLATE JOINING
	10	177 446 13 37	PLATE



NOTE:
2.58M HEIGHT MAST IS
DETAILED ON A SEPARATE
DRAWING.

ISO 5817-B THIS IS A SAFETY CRITICAL COMPONENT

First angle projection	Geometric tolerances added	Blank no.	Scale
General tolerance (IT) in mm	Part specification changed	1798086062	1:5
Size range	Weld standard changed	collective drawing	of 1
ISO 14303			
ISO 14304			
ISO 14305			
ISO 14306			
ISO 14307			
ISO 14308			
ISO 14309			
ISO 14310			
ISO 14311			
ISO 14312			
ISO 14313			
ISO 14314			
ISO 14315			
ISO 14316			
ISO 14317			
ISO 14318			
ISO 14319			
ISO 14320			
ISO 14321			
ISO 14322			
ISO 14323			
ISO 14324			
ISO 14325			
ISO 14326			
ISO 14327			
ISO 14328			
ISO 14329			
ISO 14330			
ISO 14331			
ISO 14332			
ISO 14333			
ISO 14334			
ISO 14335			
ISO 14336			
ISO 14337			
ISO 14338			
ISO 14339			
ISO 14340			
ISO 14341			
ISO 14342			
ISO 14343			
ISO 14344			
ISO 14345			
ISO 14346			
ISO 14347			
ISO 14348			
ISO 14349			
ISO 14350			
ISO 14351			
ISO 14352			
ISO 14353			
ISO 14354			
ISO 14355			
ISO 14356			
ISO 14357			
ISO 14358			
ISO 14359			
ISO 14360			
ISO 14361			
ISO 14362			
ISO 14363			
ISO 14364			
ISO 14365			
ISO 14366			
ISO 14367			
ISO 14368			
ISO 14369			
ISO 14370			
ISO 14371			
ISO 14372			
ISO 14373			
ISO 14374			
ISO 14375			
ISO 14376			
ISO 14377			
ISO 14378			
ISO 14379			
ISO 14380			
ISO 14381			
ISO 14382			
ISO 14383			
ISO 14384			
ISO 14385			
ISO 14386			
ISO 14387			
ISO 14388			
ISO 14389			
ISO 14390			
ISO 14391			
ISO 14392			
ISO 14393			
ISO 14394			
ISO 14395			
ISO 14396			
ISO 14397			
ISO 14398			
ISO 14399			
ISO 14400			