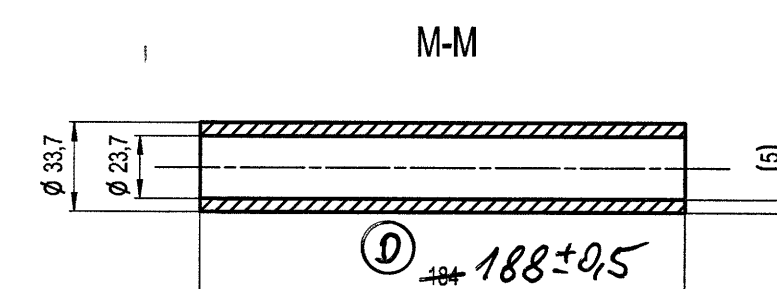
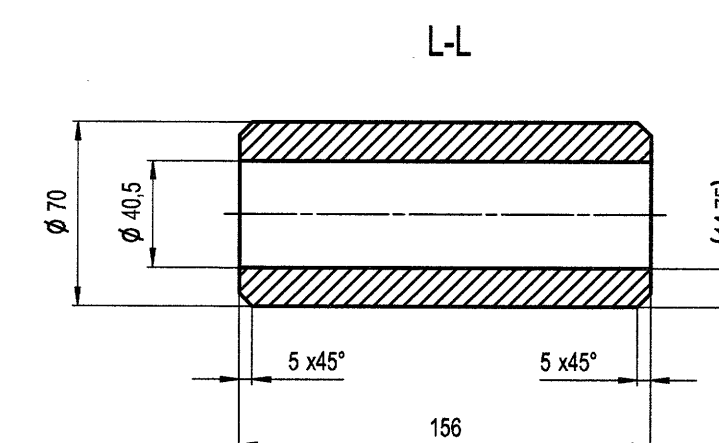
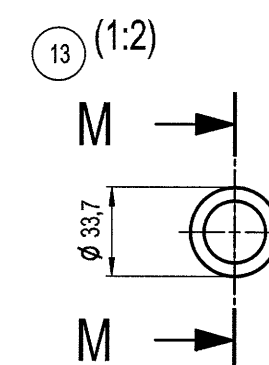
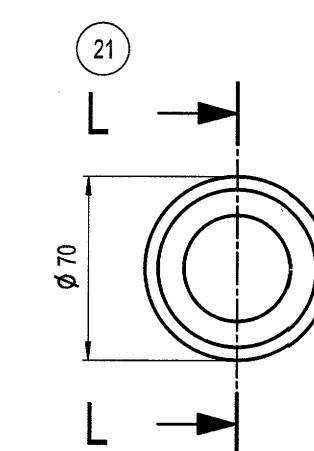


IMPORTANT:
FINISHED DIMENSIONS ARE BINDING
THE FLAT PATTERN MUST BE ADAPTED
ACCORDING TO THE EDGE METHOD

IMPORTANT:
FINISHED DIMENSIONS ARE BINDING
THE FLAT PATTERN MUST BE ADAPTED
ACCORDING TO THE EDGE METHOD



Brandová Eva

bez laku

B100/ = $\sqrt{\frac{\text{Ohne Beschichtung}}{\text{KWN 2186915}}}$

ZM/19/00294

REFER TO PROTECTION NOTICE ISO 19016		MATERIAL			TYPE	DWG NO.	VARS STATUS
		ECO.NR. 65313	MAT-SPEC:		UGD 4556663X		03 SF
HSTG		DRAWING BY	APPROVED BY	LAST MODIFIED BY	WEIGHT	SCALE	FORMAT
ISO 8015	ISO 14405	DATE 17.07.2014	15.03.2019	14.03.2019	756.5 KG	1:5	A0
ISO 2780	m/K	NAME MOORE	SCHULZL	SCHULZL	DRWS		3 / 5
ISO 13628	Bf						
ISO 8062	CT10						
ISO 9013	231						
ISO 1101	EN ISO 1302						
<input checked="" type="checkbox"/> ISO 10002 <input checked="" type="checkbox"/> ISO 9001 <input checked="" type="checkbox"/> ISO 9004 <input checked="" type="checkbox"/> ISO 14001 <input checked="" type="checkbox"/> ISO 14004 <input checked="" type="checkbox"/> ISO 26001 <input checked="" type="checkbox"/> ISO 26004							
KWN 218151							
SWT Seitenwand links Aufgabetrichter							
Side Side panel LH feedhopper							
					PART NO.	REV.	
					2046153	03.00	