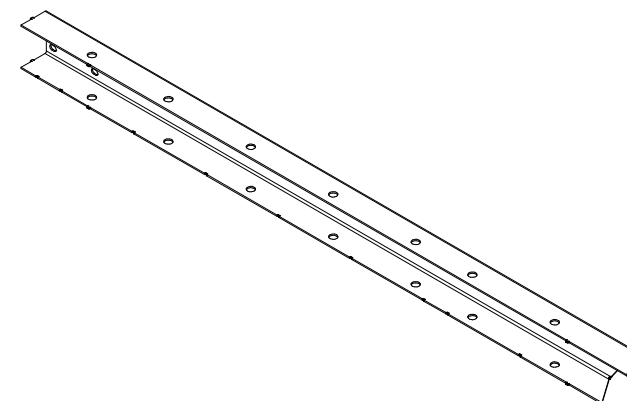


Ⓑ OOSTRANĚN 2x ZÁMEK



Ⓑ ZM/22/00682 - OOSTRANĚN 2x ZÁMEK
15.12.2022 Sicha P.

B100 = √
Ohne Beschichtung
KWN 2188113

Achtung
Fertigmaße sind verbindlich
Maße der Abwicklung nicht bindend
Abwicklung dem Kantverfahren anpassen

Fehlende Maße können dem
DXF entnommen werden
Missing dimensions
can be found in the DXF

Important
Finish dimensions are binding
The drawing must be adapted
according to the edge method

REFER TO PROTECTION NOTICE ISO 15016		MATERIAL ECON. NO.		MATERIAL SPEC.		TYPE		DOCUMENT NO.		VERS.		STATUS	
		S355J2-N		WZMCH/MTBR/AD05		UGD		6488152		00		PF	
HSTG		DRAWING BY		APPROVED BY		LAST MODIFIED BY		WEIGHT		SCALE		FORMAT	
ISO 8015		DATE		10.12.2020		13.01.2021		65		1:10		A1	
ISO 2768		NAME		WILLERSC		WILLERSC		FIRST USE:				SHEET OF	
ISO 13920		DESCRIPTION		U-Blech rechts				K077				1 / 1	
ISO 8062		CT10											
ISO 9013		231											
ISO 1101		EN ISO 1101		U-Sheet metal RH									
✓      						PART NO.		2939725		REV. NO.		-	
KWN 2188113													

KLEEMANN

2939725