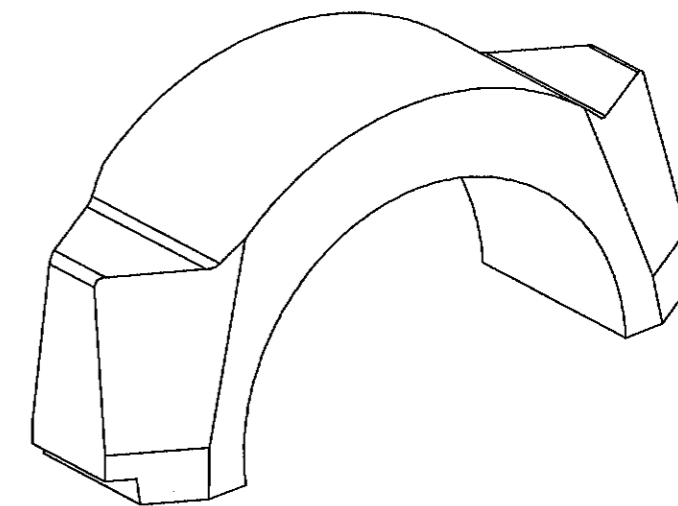
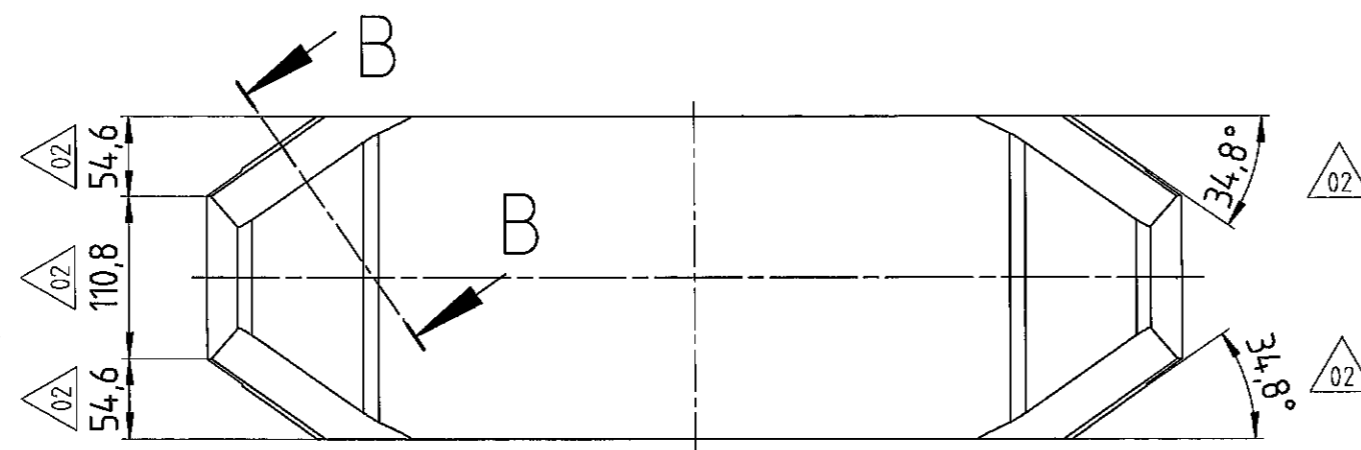
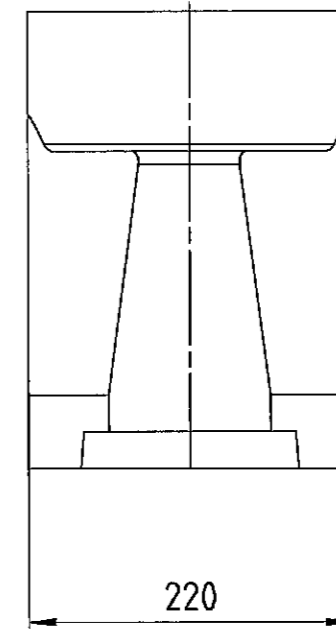
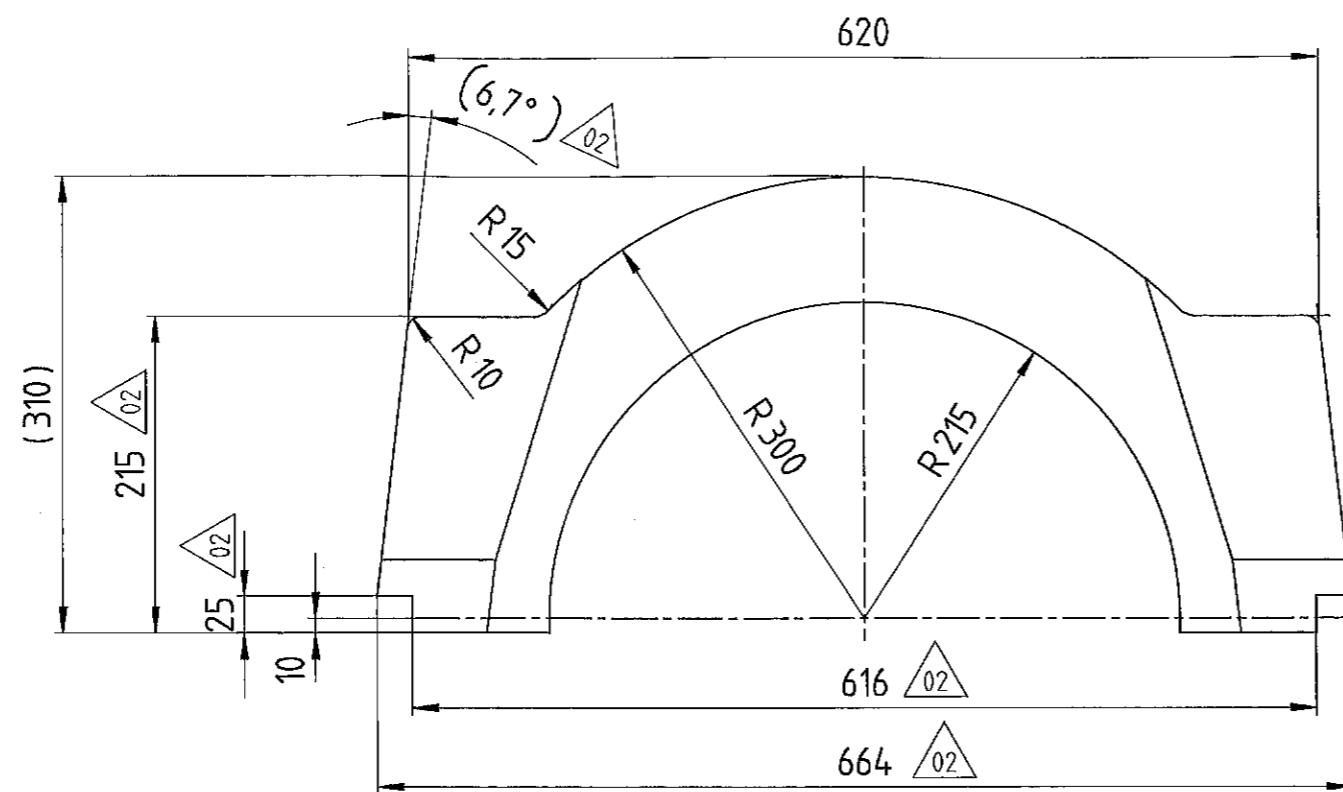
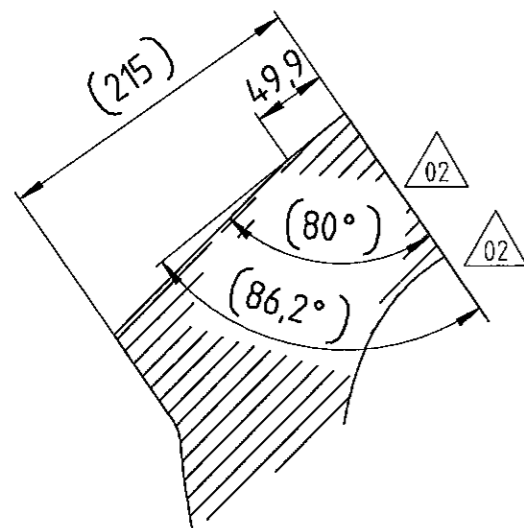


- Weitergabe sowie Vervielfältigung dieser Dokumente, Verwertung und Mitteilung seines Inhalts sind verboten, soweit nicht ausdrücklich gestattet. Zuwiderhandlungen verpflichten zu Schadenersatz. Alle Rechte für den Fall der Patent-, Gebrauchsmuster- oder Geschmacksmustererhaltung vorbehalten. -
The reproduction, distribution and utilization of this document as well as the communication of its contents to others without express authorization is prohibited. Offenders will be held liable for the payment of damages. All rights reserved in the event of the grant of a patent, utility model or design.



B-B



B251/ = Beschichtung "Lack"
KWN 2186915

Abnahmeprüfzeugnis nach EN 10204-3.1 ist vorzulegen.

| | | | | | | | | |
|--------------------------------------|-----------|---|-------------|------------------|-------------------|-------|--------------|--|
| REFER TO PROTECTION NOTICE ISO 16016 | | MATERIAL | | | TYPE DOCUMENT-NO. | | VERS. STATUS | |
| | | ECN-NO. 45357 | | | UGD 4289599 | | 02 PF | |
| ISO 8015 | ISO 14405 | DRAWING BY | APPROVED BY | LAST MODIFIED BY | WEIGHT | SCALE | FORMAT | |
| ISO 2768 | m/K | DATE | 18.10.2011 | 09.05.2016 | 136 KG | 1:5 | A3 | |
| ISO 13920 | BF | NAME | EXRUDOLPHL | KLKAZMAIERB | FIRST USE | K006 | SHEET OF | |
| ISO 8062 | CT10 | DESCRIPTION | | | | | | |
| ISO 9013 | 231 | Lagerschale oben Rohteil Gestell STR110 | | | | | | |
| ISO 1101 | | BEARING HOUSING | | | | | | |
| EN ISO 1302 | | | | | | | | |
| ✓ = beliebig at liberty | | ✓ = $\sqrt{R_z} = 25$ | | | PART NO. | | REV. NO. | |
| ✓ = $\sqrt{R_z} = 100$ | | ✓ = $\sqrt{R_z} = 6.3$ | | | 2241888 | | 01 | |
| KWN 2188113 | | | | | | | | |