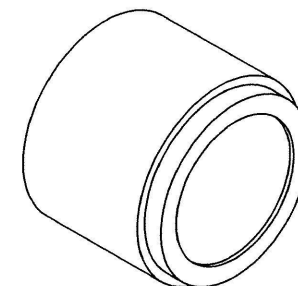


Visas 4.



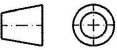
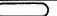






- 2 -03- 2015
ARCHIV

2

N2 14/01402

$$\sqrt{\left(\sqrt{\text{Rz16}}\right)\left(\sqrt{\text{Rz25}}\right)}$$

(01)

First angle projection		01	Adding critical parameter on 002		T48720		
			Oiled --> Oiled permissible				
General tolerance (GT) in mm							
Size range		Index	alteration		Change no	Fit	Toler.
≥ 30 > 30 ≤ 120	> 120 ≤ 400	> 400 ≤ 1000	Inspection dim. 		Material: S235JR following EN10025-2		Weight: in Kg
GT fine		Auxiliary dim. ()	Date	Name	Blank no:		1.6
L	0.2	0.5	0.8	2	4	Drawn	10.12.2013
J	Fontenay	Checked	13.12.2013	F.Praust	Title:	spacer	
Auth'd	20.12.2013	R.Pelletier	M.check		13.1.2014	J.LeCesne	rear suspension
Lengths (L) and angle (\angle) = \pm GT		PROD.		Scale		1:1	
Tolerance Symbols ISO 1101		Scale		1:1		Sheet: 1 of: 1	
<ul style="list-style-type: none">  roundness = $1/2\sigma$-Tol.  straightness/flatness = GT  concentricity/run out = GT  symmetry = GT  parallelism = GT  position = GT 		Drawing number		11914013301		Confidential document	
Languages: en fr		Refer to protection notice ISO 16016		Repl.		Orla.	

A3