

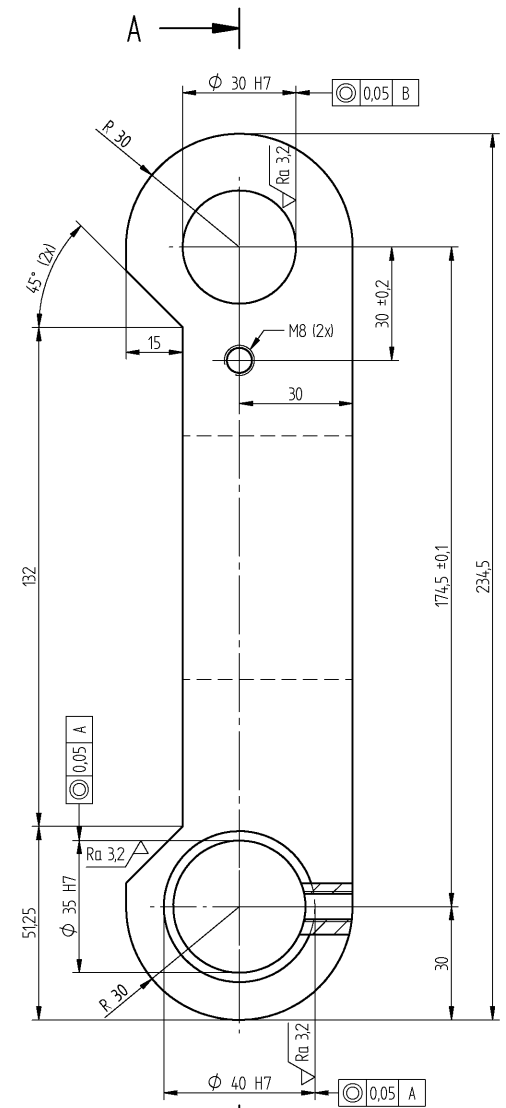
Technical drawing of a mechanical part, showing front and top views with dimensions and tolerances.

Front View (Top):

- Overall width: 290 ±0.2
- Overall height: 80
- Top flange width: 12 (left), 38 (middle), 15 (right)
- Top flange thickness: 15 (left), 38 (middle), 12 (right)
- Top flange radius: R15
- Top flange hole diameter: $\varnothing 15$ (2x)
- Top flange hole position: 55 ±0.2
- Top flange hole tolerance: M8 (2x)
- Top flange hole position tolerance: (35)
- Top flange hole position tolerance: (20)
- Top flange hole position tolerance: (20)
- Top flange hole position tolerance: (25)
- Top flange hole position tolerance: (25)

Top View (Bottom):


- Overall width: 290 ±0.2
- Overall height: 90
- Top flange width: 25 (left), 82.5 (middle), 20 (right)
- Top flange thickness: 25 (left), 82.5 (middle), 20 (right)
- Top flange radius: R15
- Top flange hole diameter: $\varnothing 15$ (2x)
- Top flange hole position: 55 ±0.2
- Top flange hole tolerance: M8 (2x)
- Top flange hole position tolerance: (35)
- Top flange hole position tolerance: (20)
- Top flange hole position tolerance: (20)
- Top flange hole position tolerance: (25)
- Top flange hole position tolerance: (25)



A →

☐ b) VÝKRES ZCELA PREKRESLEN

☐ a) VÝKRES ZCELA PREKRESLEN

Index	14/00325	Datum	14.3.2014	Priručník	ix	
Značka	13/01814	Datum	20.12.2013	KAPUSTA	ix	
	13/00366	Datum	22.5.2013	KAPUSTA	ix	
	13/00182	Datum	22.2.2013	KAPUSTA	ix	
Materiál	S235JRG1	Rozměr	P60-290x235	Hmotnost v kg	9,77	Meritko
				C. v. sestavy		Poz.
Výpracoval	KAPUSTA					Kusovník
Kontroloval						ODELENÝ
Schválil		Datum	2.5.2013	Poznámka		Starý výkres
Název	DESKA			MKS001.03.1058		Listu List