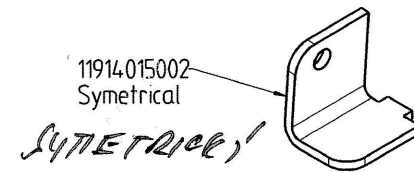
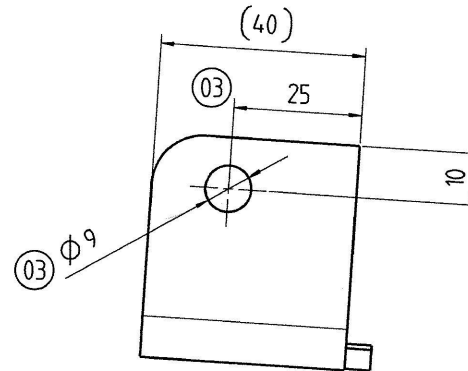


View following F



11914015002
Symetrical

Symetrický

PŘEKLAD

dne: 17. 12. 2014

- 4 -03- 2015

PROVEDLA

ARCHIV

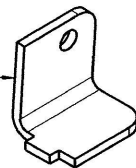
2

UŠETŘENÍ

TRONITKA DAT.

11914015000
According to plan

DLE PLÁNU



NOTE :
- Metal sheet thickness : 4 mm
- Radii without dimension : R = 10
- Inside bend radii R = 4
vnitřní RADIUS 4

N2 14/01402

Condition at time of delivery	
de-scaled (degree of purity SA 2 1/2 acc. ISO 8501-1)	X
without burrs acc. WN 11310	
Permissible top-end rounding during flame cutting (also positive bead acc. WN 10572)	
oil-free / free of grease	
oiled	
oiling permissible	X
Indicate the required condition at time of delivery with an X.	

First angle projection	03	Dim. 12.8 --> 8.8	T62488		
General tolerance (GT) in mm					
Size range					
GT coarse					
Lengths (L) and angle (L/Δ) = ± GT					
Tolerance Symbols ISO 1101					
roundness = 1/20-Tol.					
straightness/flatness = GT					
concentricity/run out = GT					
symmetry = GT					
parallelism = GT					
position = GT					
Languages: en,fr					
Confidential document					
Refer to protection notice ISO 1606					
Repl.					
Orig.					

LASER cutting tolerances				
NOTA : min cutting radius without dimensions R = 1 mm unless otherwise specified				
≤ 30	30 < ≤ 120	120 < ≤ 400	400 < ≤ 1000	1000 <
± 0,5	± 0,8	± 1,0	± 1,5	± 2,0

Approved

11914015000d001

A3